

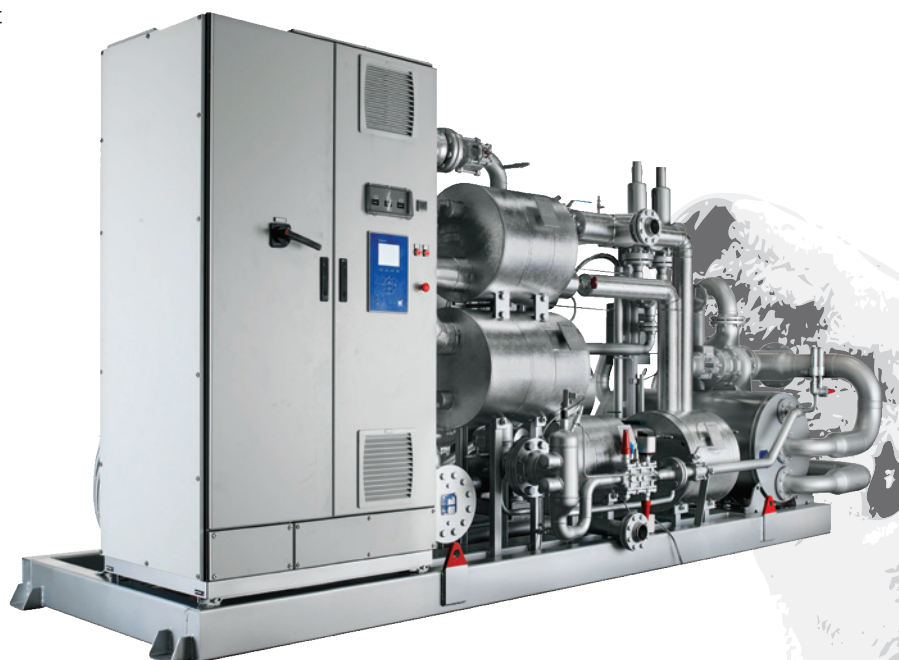
Sabroe HeatPAC heat pumps

Ammonia-based heat pumps using a screw compressor, with a capacity of up to 1600 kW

HeatPAC units are an extremely compact heat pump based on ultra-reliable Sabroe high-pressure screw compressors, using ammonia as refrigerant.

These highly customisable integrated units, featuring an uncomplicated flooded evaporating system, provide exceptional heat pump capacity from the smallest possible footprint, and with only a very small refrigerant charge. They are designed to provide a cost-effective way to tackle needs for cooling and heating at the same time, providing an extremely high coefficient of performance (COP).

Sabroe HeatPAC heat pumps are the ideal solution for effectively exploiting low-temperature waste heat, and turning it into hot water (up to 90°C), using only a minimum of electrical energy.



HeatPAC 157 HR

Advantages

Factory-assembled, pre-tested packaged units based on Sabroe screw compressors world-renowned for their reliability

Integrated configuration weighs less, and has less than half the footprint of bespoke heat pump designs

Indirect cooling and an uncomplicated flooded evaporating system, using natural ammonia (R717) only

Exceptional COP and outstanding part-load performance

Refrigerant charge 50% smaller than with conventional heat pumps, because of special condenser/evaporator design

Benefits

Easy pre-commissioning makes installation and running-in both faster and cheaper. Factory acceptance tests (FAT) available as an option

Low installation costs. Easy to mount even in confined spaces or unconventional locations

Greater safety and outstanding reliability

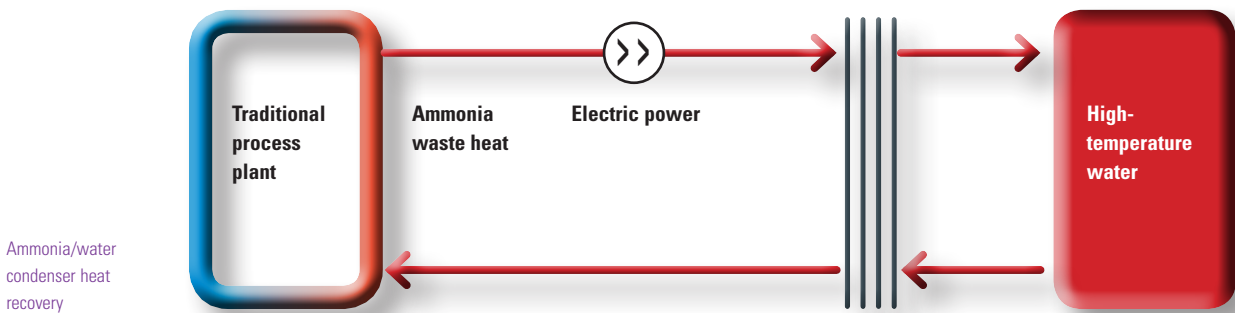
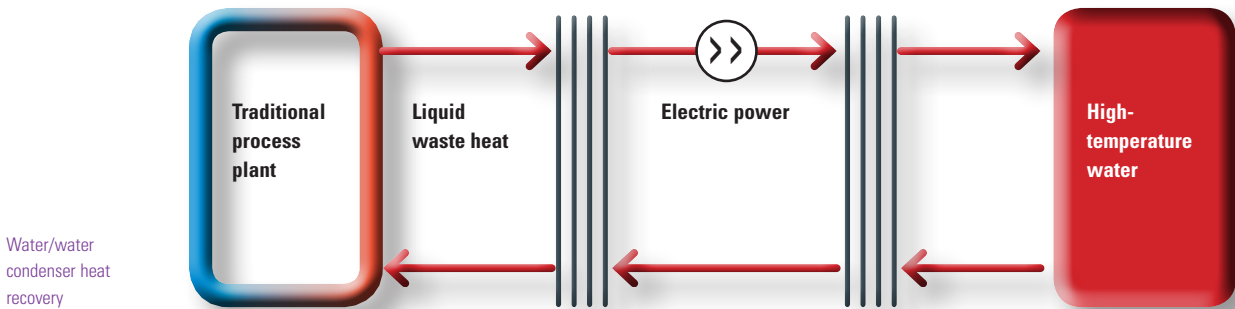
Low operating costs

Higher output per unit kW/kg refrigerant, lower unit cost and lower installation costs

Compliance

All HeatPAC heat pumps are fully compliant with appropriate major international design codes and the specifications laid down by the most common classification societies.

Approval in accordance with other technical requirements, specific national legislation or other classification societies' requirements is available on request.



The HeatPAC 157-HR is a versatile heat pump that can cope with a wide range of operating conditions. These units are particularly efficient under part-load conditions due to the variable speed drive (1000–6000 rpm) fitted as standard.

Each unit is specially configured to comply with the specific set of operating conditions, in order to ensure the most effective exploitation of the waste heat available.

Specific capacity must be calculated for actual running conditions.
Heating capacity 1600 kW at 40°C heat source and 85°C water out.

Approximate dimensions

Type	R717 charge	Dry weight	Dimensions in mm		
	kg	kg	L	W	H
HeatPAC 157 HR	-150	-9500	-6500	-2500	-2700

PUBL-6866 2012.11 - 1

All information is subject to change without notice

Johnson Controls Denmark ApS · Sabroe Factory
Christian X's Vej 201 · 8270 Højbjerg · Denmark
Phone +45 87 36 70 00 · Fax +45 87 36 70 05
www.sabroe.com

